

Herald Brass Missions Trip To Thailand November 28 – December 10, 2024

How we got there:

Punxsutawney to Carlisle to Newark to Istanbul,
Turkey to Bangkok, Thailand to Mahachai, Samut
Sakhon Province, Thailand to Baan Bo, Samut
Sakhon Province, Thailand.

The Distance from Punxsutawney to Bangkok – 8,652 miles (more or less as the crow flies... oh yeah, then back again) or 2 car rides of 3 hours each and 2 van rides of 3 hours each and 4 plane rides of around 11 hours each

On our first day in Thailand we were on a plane, 2 trains, a bus, a boat, a taxi, and a car.

Herald Brass

Doug Enck, 1st Trumpet and Trip Leader; Lee Nanfelt – 2nd Trumpet; Mike Smucker – Bass Trumpet; Dean Fink – French Horn; Ed Heckman – Tuba; Don Jones – Percussion.

Churches we worked with:

Mahapawn Living Water Church

Mahapawn Baan Paeo Church

Mahapawn Baan Po Church plant

Here are some scenes from Bangkok

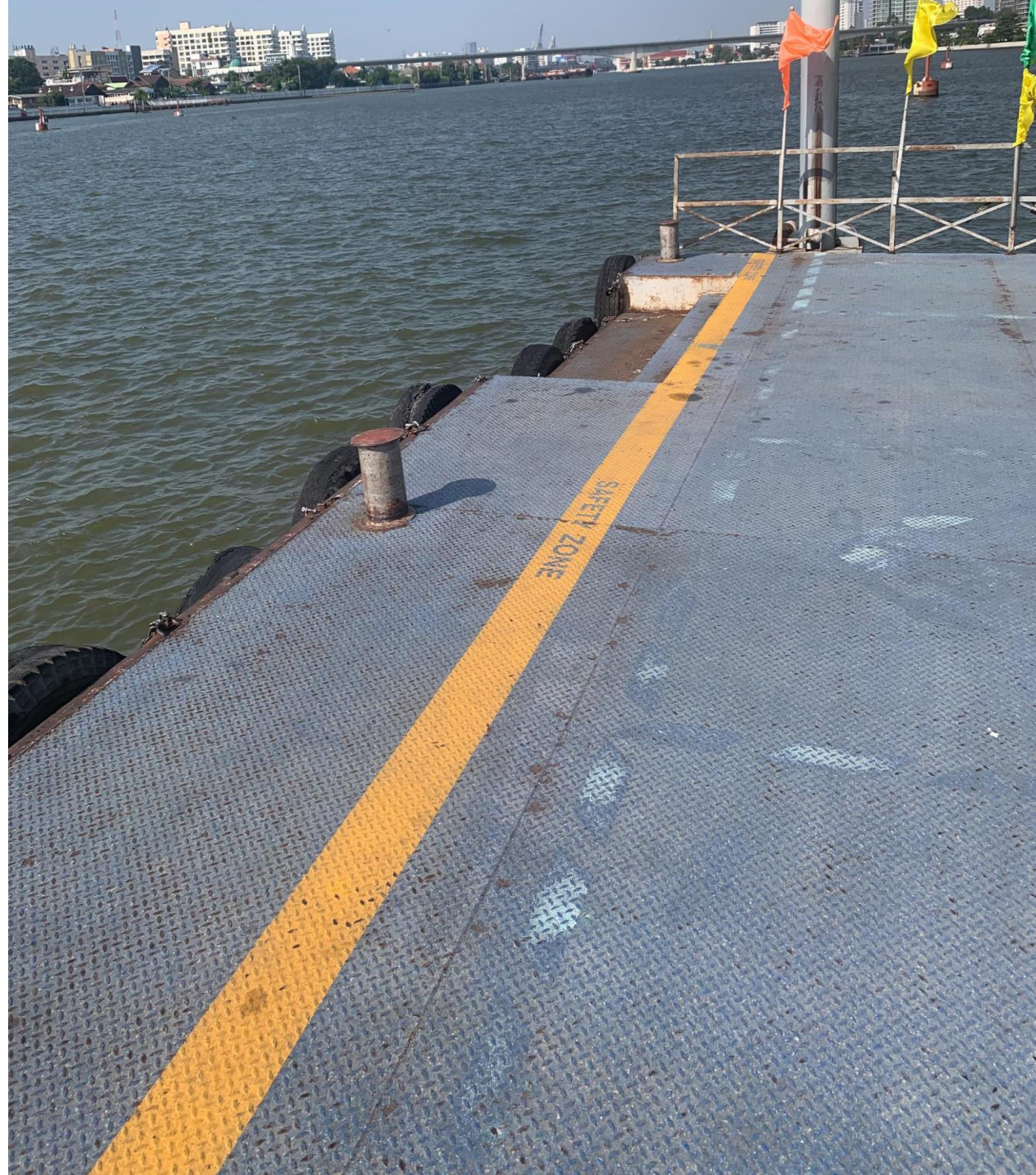


← 8101-8113 → 8114A • 8114B →

THE KING

DK

DI









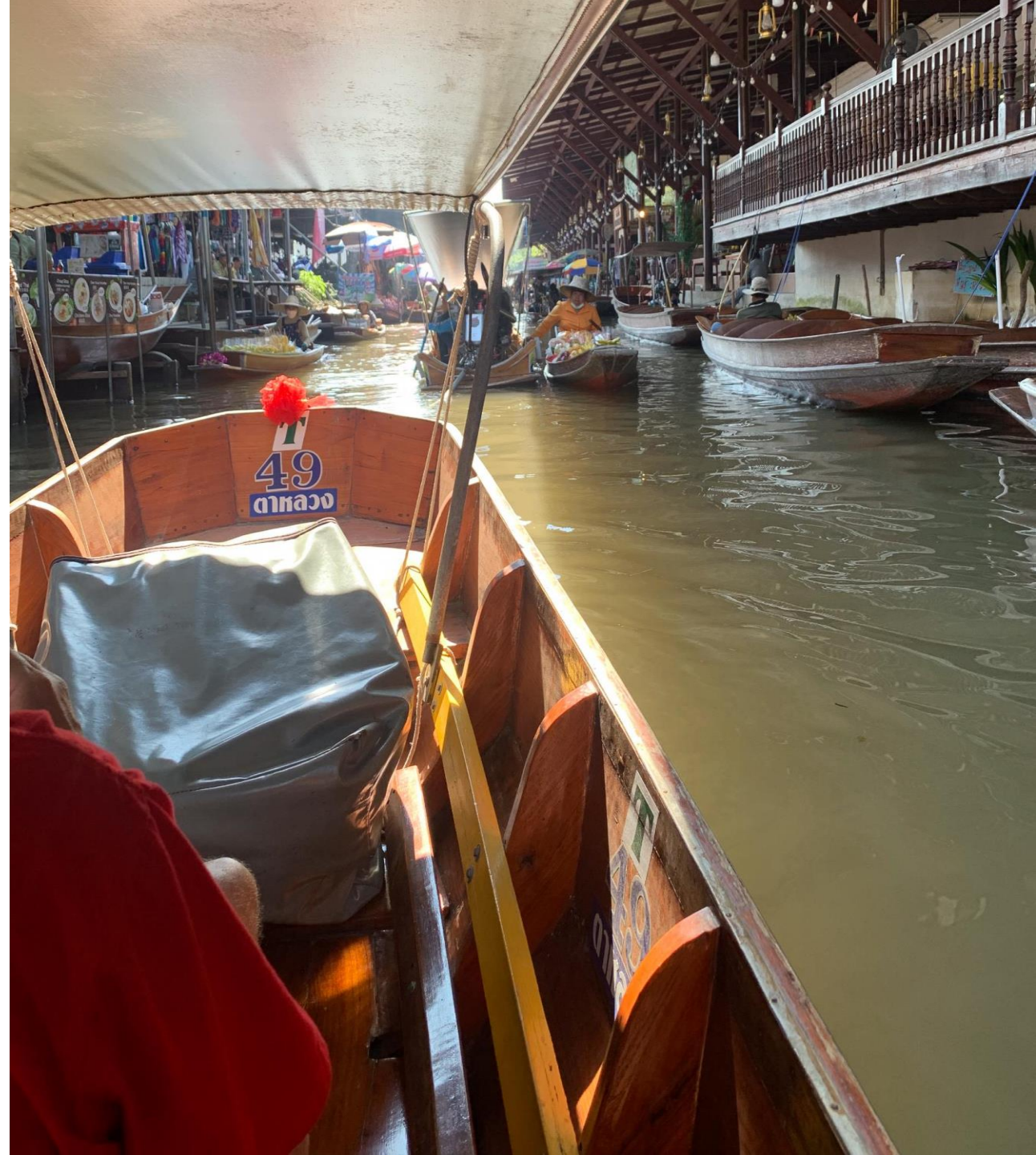








Here are some things you
may not see in the USA













Speaking of where we stayed:
Our first and last nights in Thailand were spend in
the Alliance Guest House in Bangkok.
So could you!

The rest of our time we spent in Mahachai at a
Serviced Apartment (current price \$23 a night)
call The Eight. Really nice accommodations.
Hardest bed in the known universe, though.



101
The
Eight





Here are the people we worked with:

Ed and Sue Danneker

International Workers of The C. & M. A. from the
Eastern Pennsylvania District

Coming to the close of their Missionary service,
they have planted 5 Churches in Thailand



Pastor Sukprasan and his wife Eve
Pastor of the Mahapawn Living Water Church







Pastor Sittichai and his wife Bang
Pastor of the Mahapan Baan Paeo Church





Pastor Attapon (also known as Eve's Brother)
Church Plant Pastor in Baan Po





Jun and Maria Naupo are International Workers sent out by the The Christian and Missionary Alliance of the Philippines. They have served 2 terms (pray about their third) or about 10 years in Thailand.



Chris Metelsky from Penn's Valley Alliance Church
outside of State College, PA

Chris is a Mission Intern with the C. & M.A. He
had been in Thailand just a month when we came.



Here are two Private Schools we played in:

One is a nominal Catholic School

One is an Evangelical Christian School





Thank you for making this trip possible. Your giving, praying, and support got me there, allowed me to minister there, and come back to share it and praise God for His faithfulness.